

**CLASS**  
**8**

# **BVPY QUESTION PAPER – STAGE 1**

**December 17, 2020**

Part A – Mathematics (Q1 to Q30)

Part B – Science (Q1 to Q30)

**Maximum Marks: 60**

**Duration : 60 minutes**

---

## **Instructions for Students :**

1. Each question carries one mark.
2. This paper consists two parts i.e. Part ‘A’ (Mathematics) Q.1 to 30, Part ‘B’(Science) Q1 to 30.
3. There is no negative marking .

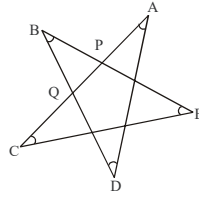
## PART 'A' (MATHEMATICS)

1.  $\sqrt{1 + \sqrt{1 + \sqrt{1 + \dots}}}$
- A. equals 1  
B. lies between 0 and 1  
C. lies between 1 and 2  
D. is greater than 2
2. The square root of a perfect square containing 'n' digits has \_\_\_\_\_ digits
- A.  $\frac{n+1}{2}$   
B.  $\frac{n}{2}$   
C. Either A. or B.  
D. None of these
3. The solution of  $3^{3x-5} = \frac{1}{9^x}$  is -
- A.  $\frac{5}{2}$   
B. 5  
C. 1  
D.  $\frac{7}{3}$
4. Which one of the following is not true ?
- A. There does not exist any rational number whose square is 4  
B. There does not exist any rational number whose square is 5  
C. There does not exist any rational number whose square is 2  
D. None of these
5. The value of  $\frac{2^{1/2} \times 3^{1/3} \times 4^{1/4}}{10^{-1/5} \times 5^{3/5}} \div \frac{4^{-2/3} \times 5^{-7/5} \times 4^{1/4}}{4^{-3/5} \times 6^{-1/3}}$  is equal to -
- A.  $5\sqrt{2}$   
B. 1  
C. 6  
D. 18
6. What must be added to  $\frac{x}{y}$  to make it  $\frac{y}{x}$  ?
- A.  $\frac{y-x}{y^2x^2}$   
B.  $\frac{y^2-x^2}{xy}$   
C.  $\frac{xy}{x+y}$   
D.  $\frac{x^2y^2}{x^2+y^2}$

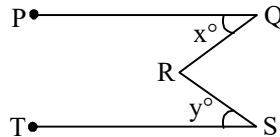
7. If  $(x^2 + 1)(? - x^2 + 1) = x^6 + 1$ ,  
then ? will be replaced by
- A.  $x^4$  B.  $x^3$   
C.  $-x^4$  D. None of these
8. If  $0 < x < 1$ , then the value of  $x + \frac{1}{x}$  is
- A. Greater than 2 B. Less than 2  
C. Cannot be determined D. None of these
9. If  $2^{2x-y} = 32$  and  $2^{x+y} = 16$  then  $x^2 + y^2$  is equal to
- A. 9 B. 10  
C. 11 D. 13
10.  $\frac{a^3 + b^3 + c^3 - 3abc}{a^2 + b^2 + c^2 - ab - bc - ca} = \text{_____}$ .
- A. 0 B.  $a + b + c$   
C. 1 D. None of these
11. If  $\frac{4}{y} - \frac{3}{x} = \frac{1}{xy}$  and  $\frac{5}{y} - \frac{7}{x} = \frac{12}{xy}$ , find  $x - y$ .
- A. 2 B.  $\frac{12}{13}$   
C.  $\frac{14}{13}$  D. -1
12. 16 men finish one third work in 6 days. The number of additional men required to complete the job in next 6 days are -
- A. 10 B. 8  
C. 16 D. 32
13. In a mixture of 60 litres, the ratio of milk and water is 2 : 1. If this ratio is to be 1 : 2, then the quantity of water to be further added is :
- A. 60 litres B. 30 litres  
C. 40 litres D. 20 litres



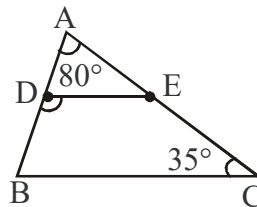
20. In the star shape shown in figure, the sum of the angles marked at the corners  $A, B, C, D, E$  is



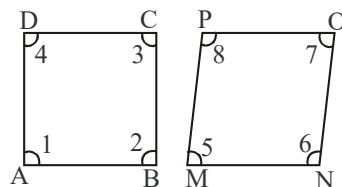
- A. 90  
B. 135  
C. 180  
D. 140
21. In the figure below (not to scale),  $\overline{PQ} \parallel \overline{TS}$ , reflex  $\angle QRS = 300^\circ$  and  $x - y = 30^\circ$ . The measure of  $y$  will be –



- A.  $25^\circ$   
B.  $15^\circ$   
C.  $20^\circ$   
D.  $30^\circ$
22. In the adjoining figure, it is given that  $D$  and  $E$  are the mid points of  $AB$  and  $AC$  respectively. If  $\angle A = 80^\circ$ ,  $\angle C = 35^\circ$  then  $\angle EDB =$  \_\_\_\_\_

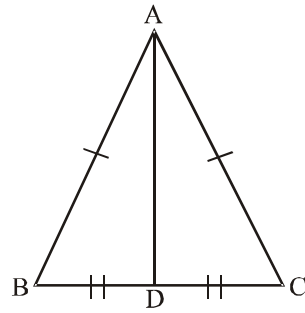


- A.  $120^\circ$   
B.  $160^\circ$   
C.  $70^\circ$   
D.  $115^\circ$
23.  $ABCD$  and  $MNOP$  are quadrilaterals as shown in the below given figure, then



- A.  $1 + 2 + 3 + 4 = 5 + 6 + 7 + 8$   
B.  $1 + 2 + 3 + 4 < 5 + 6 + 7 + 8$   
C.  $1 + 2 + 3 + 4 > 5 + 6 + 7 + 8$   
D. None of the foregoing

24. In the following fig. if  $AB = AC$  and  $BD = DC$ , then  $\angle ADC =$



- A.  $60^\circ$   
 B.  $120^\circ$   
 C.  $90^\circ$   
 D. None of these
25. If the mean of the following data be 9.2, find the value of  $p$ .

x	4	6	7	$p+4$	12	12
f	5	6	4	10	8	7

- A. 2  
 B. 1  
 C. 15  
 D. 6.4
26. The median of 0, 2, 2, 2, -3, 5, -1, 5, 5, -3, 6, 6, 5, 6 is :
- A. 0  
 B. -1.5  
 C. 2  
 D. 3.5
27. If the mode of the observation 4, 2, 3, 3, 3, 2, 2, 4, 2, 4, x, 3, 4, 4, 2, 3, 4 is 4 then  $x$  cannot be –
- A. 2  
 B. 4  
 C. 3  
 D. Both A. & C.
28. Which of the following numbers is exactly divisible by 99 ?
- A. 114345  
 B. 135792  
 C. 3572404  
 D. 913464
29. In a simultaneous throw of dice, what is the probability of getting a total of 7 ?
- A.  $\frac{1}{6}$   
 B.  $\frac{1}{4}$   
 C.  $\frac{2}{3}$   
 D.  $\frac{3}{4}$
30. Which of the following statements is **INCORRECT** ?
- A. All rhombuses are parallelograms.  
 B. All squares are not parallelograms.  
 C. All rectangles are not squares.  
 D. All squares are trapeziums.

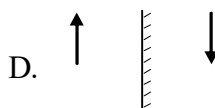
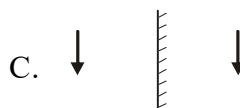
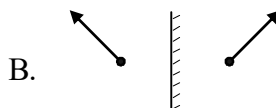
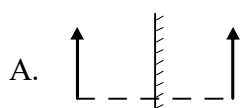
---

## PART 'B' (SCIENCE)

---

1. Conduction is possible :
  - A. when the bodies are apart from each other
  - B. when the bodies have same temperature and in thermal contact
  - C. when they have different temperatures maintaining distance between them
  - D. bodies should be in contact and should have different temperatures
  
2. 1 kilowatt hour equals to :
  - A.  $3.6 \times 10^6$  kJ
  - B.  $3.6 \times 10^6$  J
  - C. 3.6 MJ
  - D. Both B and C
  
3. When water changes its state from liquid state to vapour state,
  - A. heat is given out.
  - B. heat is absorbed.
  - C. heat is given out and then absorbed.
  - D. there is no exchange of heat between the system and the surroundings.
  
4. If a rock is brought from the surface of the moon :
  - A. its mass will change
  - B. its weight will change, but not mass
  - C. both mass and weight will change
  - D. its mass and weight will remain the same
  
5. The walls of a dam are specially thickened at the base to
  - A. withstand huge pressure of water
  - B. withstand earthquake
  - C. withstand the sound waves
  - D. none of these
  
6. Brakes of automobiles do not work well during rainy season because :
  - A. water acts as a lubricant between wheel drum and brake shoe
  - B. water destroys the wheel drum
  - C. we can't apply much force on brakes during rainy season
  - D. all are correct
  
7. Audible frequency range is :
  - A. Below 20 Hz
  - B. 20 Hz to 20 kHz
  - C. Above 20 kHz
  - D. No limit

8. Identify the wrong image formation :



9. Which instrument is used to measure earthquake waves ?

- |                 |                |
|-----------------|----------------|
| A. Seismogram   | B. Seismograph |
| C. Seismic wave | D. Seismology  |

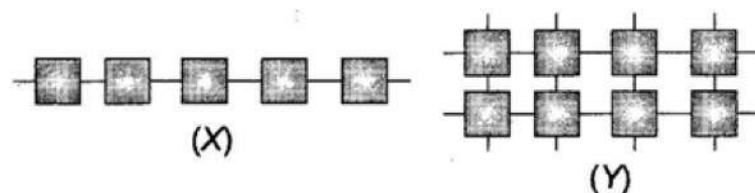
10. A lightning conductor :

- A. conducts light
- B. stops lightning
- C. protects buildings from the damaging effects of lightning
- D. prevents clouds from coming near a building and thus protects it

11. PVC (Poly vinyl chloride) and Polythene are –

- |                           |                     |
|---------------------------|---------------------|
| A. Thermosetting plastics | B. Thermoplastics   |
| C. Natural fibres         | D. Synthetic fibres |

12. See the figure given below and select the correct statement regarding polymer.



1. Figure (X) shows structure of a monomer while figure (Y) shows structure of a polymer.
  2. Small boxes in the structure represent monomers which are joined to give a polymer.
  3. Figure (X) shows structure of a linear polymer while (Y) shows structure of a cross - linked polymer.
- |                 |                    |
|-----------------|--------------------|
| A. 1 and 2 only | B. 1 and 3 only    |
| C. 2 and 3 only | D. All are correct |

13. Properties of substances *W*, *X*, *Y* and *Z* are listed below:

*W*: A liquid metal

*X*: A liquid non - metal

*Y*: Non-metal essential for respiration

*Z*: Non-metal which can conduct electricity

*W*, *X*, *Y* and *Z* are respectively



- A. Iron, iodine, hydrogen and oxygen
- B. Gold, sulphur, chlorine and hydrogen
- C. Copper, phosphorus, nitrogen and carbon
- D. Mercury, bromine, oxygen and graphite.

14. Fill in the blanks with the most appropriate option.

'W' is very reactive metal, reacts vigorously with oxygen and water therefore, stored in \_\_ (1) \_\_.

'X' is non - metal, soft and dull and forms \_\_ (2) \_\_ oxides with oxygen.

'Y' is very reactive \_\_ (3) \_\_, catches fire if exposed to air, therefore, stored in water.

- A. 1 - Water, 2 - basic, 3 - metal
- B. 1 - Kerosene, 2 - acidic, 3 - metalloid
- C. 1 - Kerosene, 2 - acidic, 3 - non - metal
- D. 1 - Water, 2 - basic, 3 - non - metal

15. Select the incorrect statements among the following:

- (i) Bitumen is used for metalling the roads
- (ii) Some inexhaustible natural resources like coal, petroleum and natural gas formed from the dead remains of living organisms are known as fossil fuels.
- (iii) Many useful substances are obtained from coal (commercial importance), so it is also called as 'Black gold'.
- (iv) Natural gas is used as a starting material for the manufacture of a number of chemicals and fertilisers.

- A. (i) and (ii) only
- B. (ii) and (iii) only
- C. (ii) and (iv) only
- D. (i), (ii) and (iv) only

16. List - I

- (P) Water gas
- (Q) Producer gas
- (R) Compressed natural gas
- (S) Liquefied petroleum gas

- A. P → (ii); Q → (iii); R → (i); S → (iv)
- C. P → (iv); Q → (iii); R → (i); S → (ii)

List-II

- (i) Fuel for vehicles
- (ii)  $\text{CO} + \text{H}_2$
- (iii)  $\text{CO} + \text{N}_2$
- (iv) Household fuel

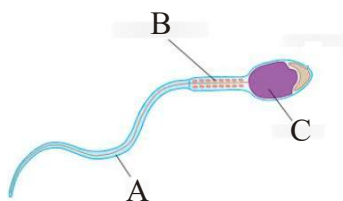
- B. P → (iii); Q → (iv); R → (ii); S → (i)
- D. P → (ii); Q → (i); R → (iv); S → (iii)

17. Calorific values of some fuels are given;

Fuel	Calorific value (kJ / kg)
Coal	25000 - 33000
Diesel	45,000
LPG	55,000
CNG	50,000

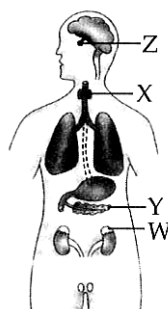
On the basis of this data, find out the correct order of efficiency of fuels.

- A. LPG > CNG > Diesel > Coal  
 B. Coal > Diesel > LPG > CNG  
 C. Diesel > CNG > Coal > LPG  
 D. CNG > LPG > Diesel > Coal
18. The head of a safety match contains:  
 A. Antimony trisulphide and potassium chlorate  
 B. Antimony chloride and potassium sulphide  
 C. Antimony carbonate  
 D. Potassium sulphide
19. What happens when a solution of an acid is mixed with a solution of a base in a test tube?  
 (i) The temperature of the solution increases.  
 (ii) The temperature of the solution decreases.  
 (iii) The temperature of the solution remains the same.  
 (iv) Salt formation takes place.  
 A. (i) only  
 B. (i) and (iii)  
 C. (ii) and (iii)  
 D. (i) and (iv)
20. Match the column-I with column-II and select the correct option from the codes given below :
- | Column-I                           | Column-II   |
|------------------------------------|---|
| a. Expansion of metals on heating. | i. Neither physical nor chemical change           |
| b. A stone kept in the sunlight    | ii. Chemical change                               |
| c. Burning of a candle             | iii. Combination of physical and chemical changes |
| d. Curdling of milk                | iv. Physical change                               |
| A. a - iv, b - i, c - iii, d - ii  | B. a - iv, b - iii, c - ii, d - i                 |
| C. a - i, b - ii, c - iii, d - iv  | D. a - i, b - iv, c - ii, d - iii                 |
21. See the diagram below. Identify the parts labelled as *A*, *B* and *C* in the diagram.



- A. *A* is the head, *B* is the middle piece, and *C* is the tail.  
 B. *A* is the head, *B* is the acrosome, and *C* is the tail.  
 C. *A* is the middle piece, *B* is the head, and *C* is the acrosome.  
 D. *A* is the tail, *B* is the middle piece, and *C* is the head.

22. Which set is mixed with the food in small intestine?
- Saliva, gastric juice, bile
  - Gastric juice, bile, pancreatic juice
  - Bile, pancreatic juice, succus entericus
  - Bile, pancreatic juice and saliva
23. Which of the following is a set of diseases caused by viruses in human beings ?
- Small pox, dysentery, malaria
  - Influenza, mumps, polio
  - Chicken pox, dengue, typhoid
  - Tuberculosis, rabies, AIDS
24. Ribosome is present in both eukaryotic and prokaryotic cells, it refers that ribosome is
- Necessary for protein synthesis
  - A membrane less organelle
  - Independent of nucleus
  - Meeting body's energy requirement in all the above conditions
25. The given figure shows positions of few endocrine glands in human body. Two patients, Ravi and Sohail recently visited an endocrinologist regarding their health issues. Doctor examined them and prepared a chart shown here to keep a record of their illness and monitor their health.



**Patient's name**

Ravi

Sohail

**Disease symptoms**

Swollen neck

Large quantities of sugar in blood and urine

Refer to the given figure and chart and select the correct option.

- Ravi is suffering from goitre which is caused due to hyposecretion of a hormone by gland X.
- Ravi is suffering from cretinism which is caused due to hypersecretion of a hormone by gland Y.
- Sohail is suffering from diabetes which is caused by hyposecretion of a hormone by gland W.
- Sohail is suffering from diabetes which is caused by hypersecretion of a hormone by gland Z.

26. Species which are restricted only to specific area and not in any other geographical area are called
  - A. Extinct
  - B. Endangered
  - C. Endemic
  - D. None of these.
27. Which of the following should come in the box 'X' in the given sequence?  
Ploughing → Levelling → Sowing seeds → [x] → Irrigation
  - A. Broadcasting
  - B. Transplanting
  - C. Manuring
  - D. Drilling
28. Which of the following are the essential parts of a flower ?
  - A. Calyx and corolla
  - B. Calyx and androecium
  - C. Corolla and gynoecium
  - D. Androecium and gynoecium
29. In plants process 'x' obtains CO<sub>2</sub> and produces O<sub>2</sub> while process Y obtains O<sub>2</sub> and produces CO<sub>2</sub>. What are the process X and Y?
  - A. X: Photosynthesis, Y: Respiration
  - B. X: Respiration, Y: Transpiration
  - C. X: Excretion, Y: Photosynthesis
  - D. X: Transpiration, Y: Respiration
30. Vocal cords occur in –
  - A. Pharynx
  - B. Glottis
  - C. Bronchii
  - D. Larynx

**Space for rough work**